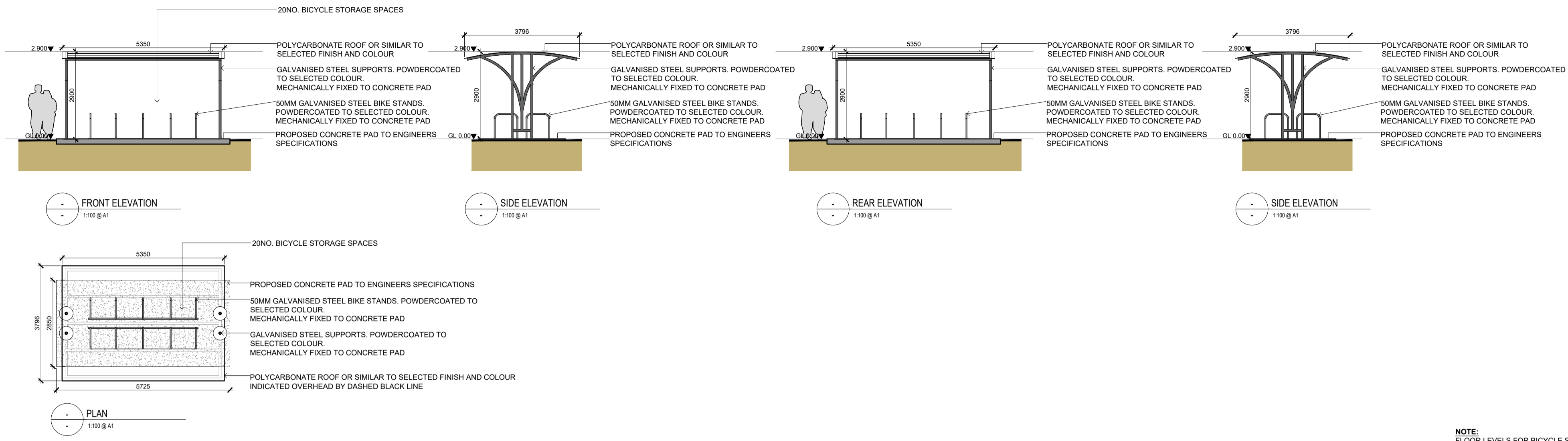
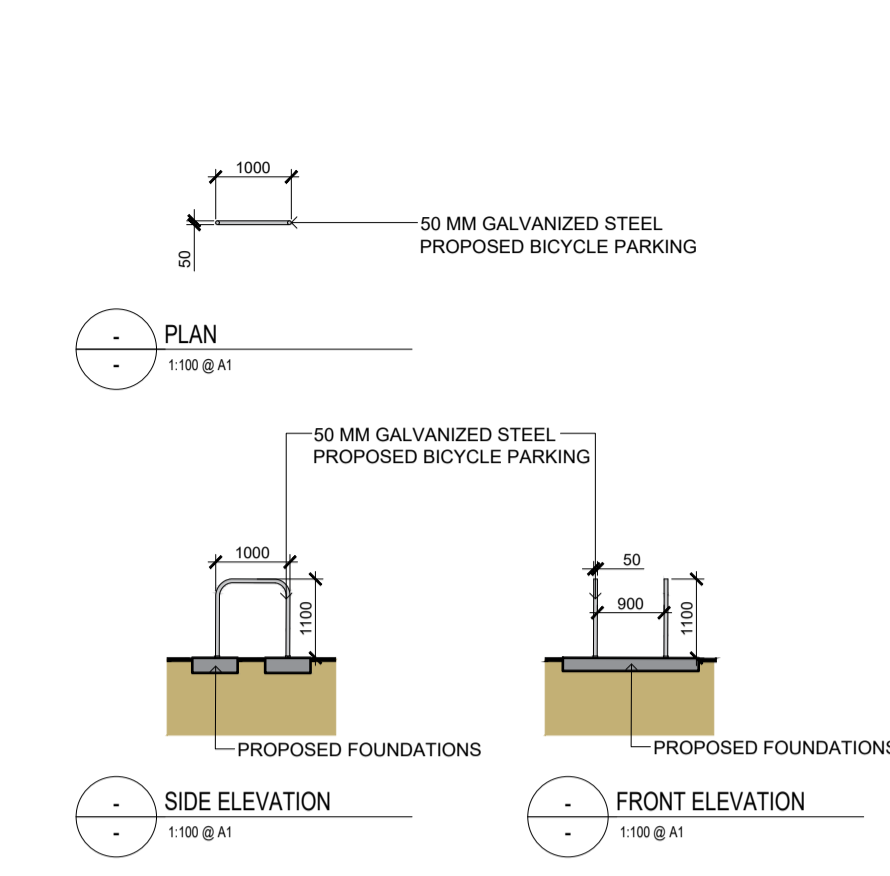


### BICYCLE SHELTER



### BICYCLE RACK



**IMPORTANT NOTE:**  
Work to figured dimensions only - do not scale print. All setting out dimensions to be checked and confirmed on site prior to commencement of work. Any inaccuracies should be brought to the attention of the architect. If in doubt - ask! All construction methods, materials, services and installations to be in accordance with all Irish Building Regulations and codes of practice at the time of construction. All sub-contractors are ultimately responsible for ensuring compliance with the regulations within their own trade.  
This drawing is copyright to Fewer Harrington & Partners.

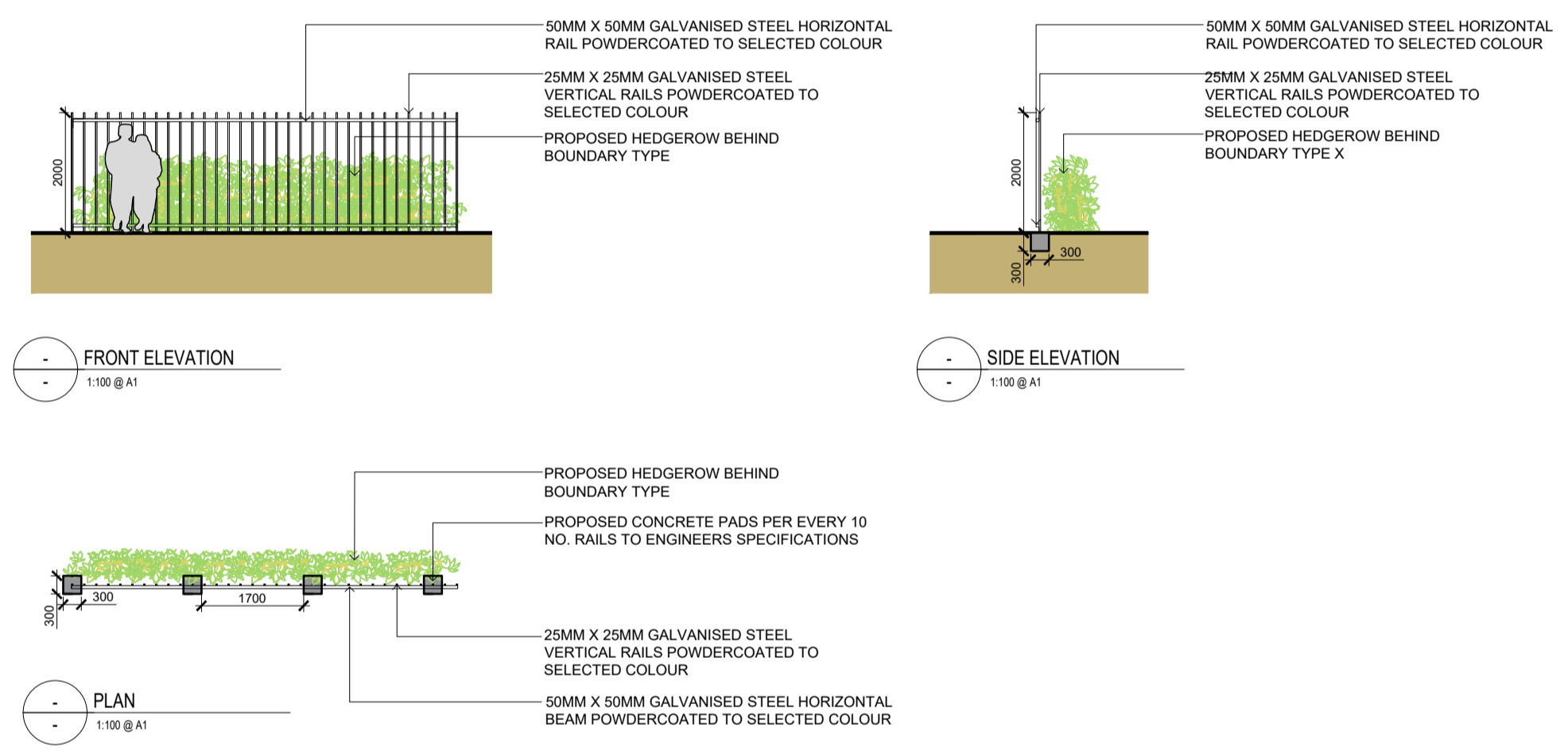
**NOTES**

**OS MAP REFERENCE INDEX**  
1:1,000 | 5701-09  
1:1,000 | 5701-10  
1:1,000 | 5701-14  
1:1,000 | 5701-15

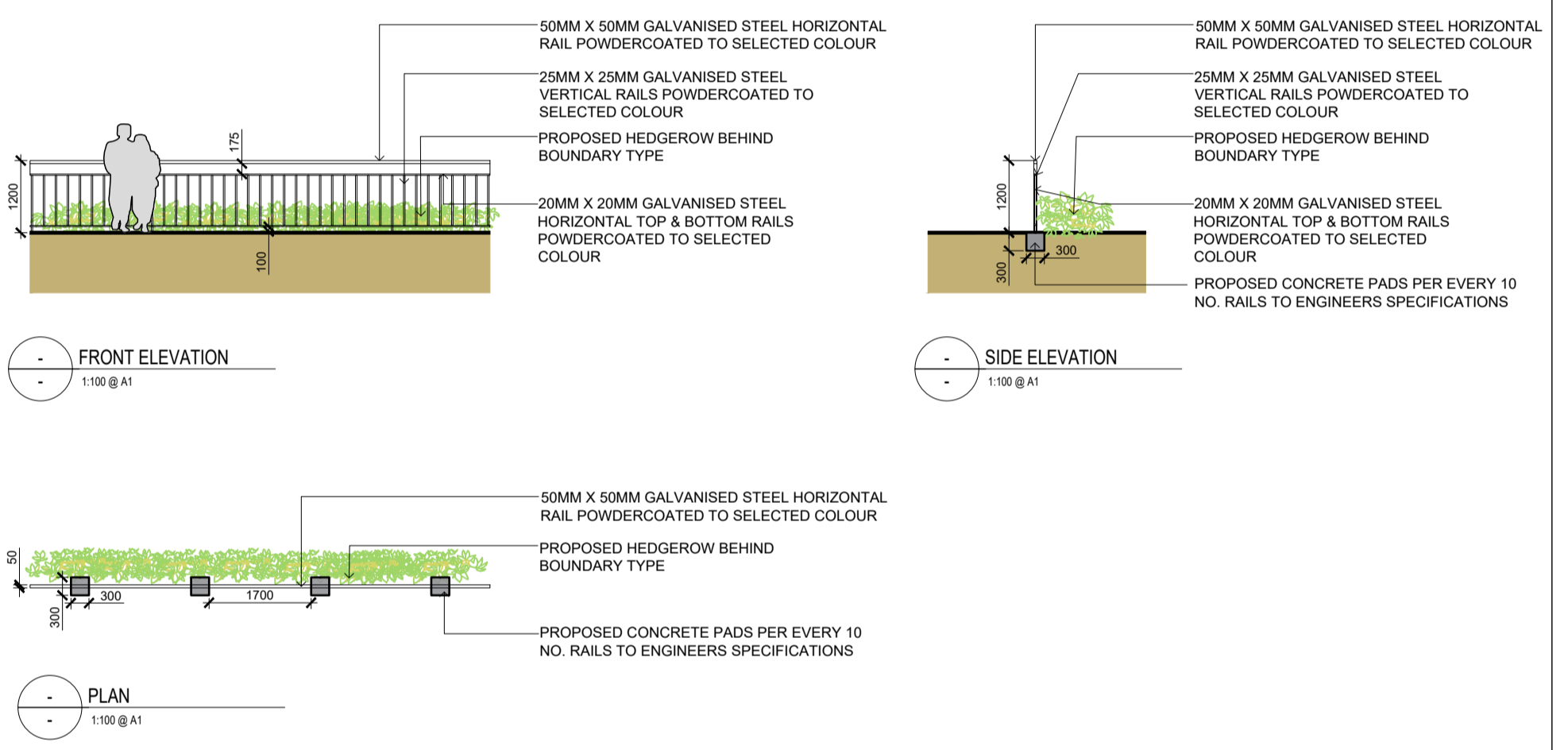
**NOTE ON BOUNDARY LOCATIONS**  
PLEASE REFER TO DRAWING NO. PP-1.01 FOR ALL BOUNDARY TYPE LOCATIONS

**NOTE ON BICYCLE STORE LOCATIONS**  
PLEASE REFER TO CUNNANE STRATTON REYNOLDS LANDSCAPE DRAWING FOR ALL BICYCLE STORAGE LOCATIONS

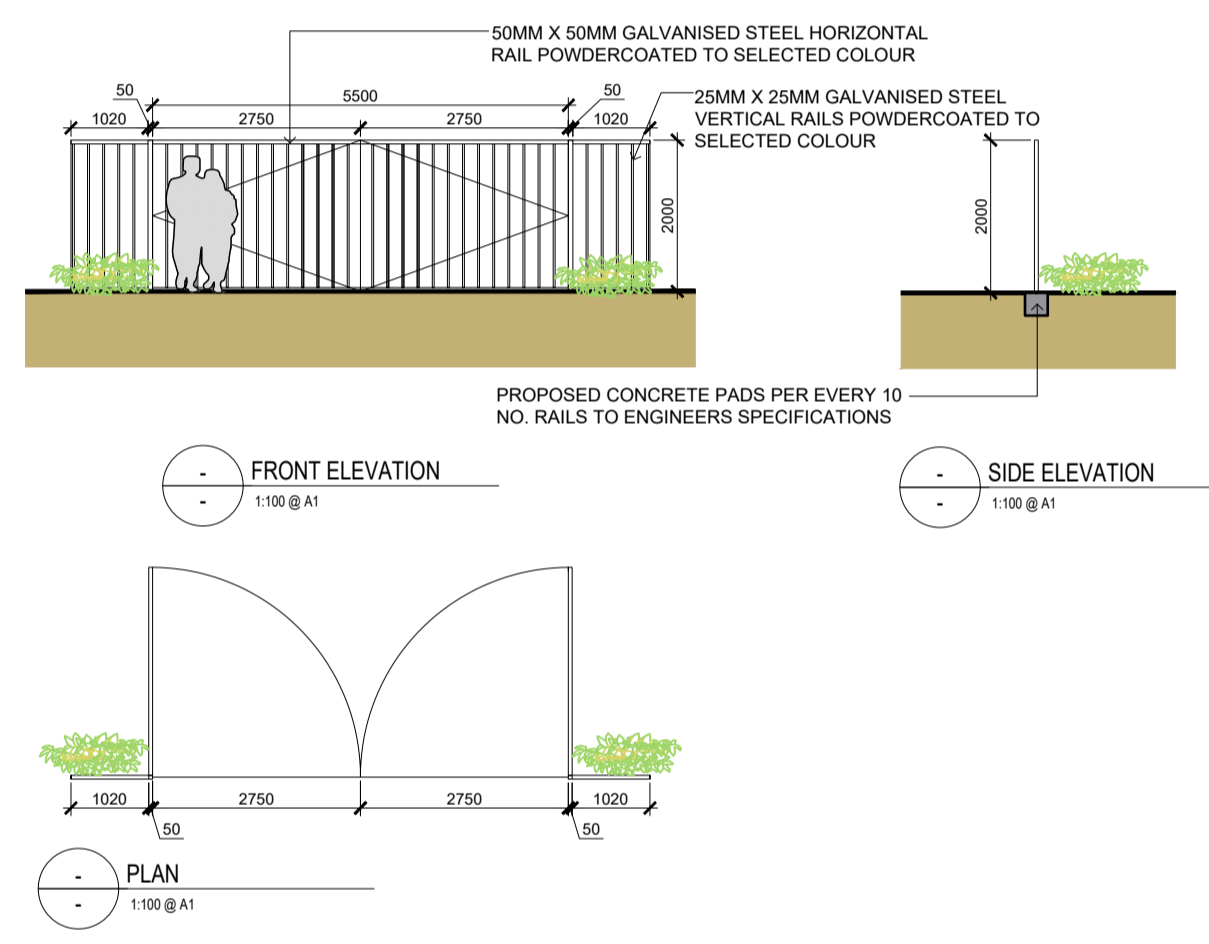
### BOUNDARY TYPE 1



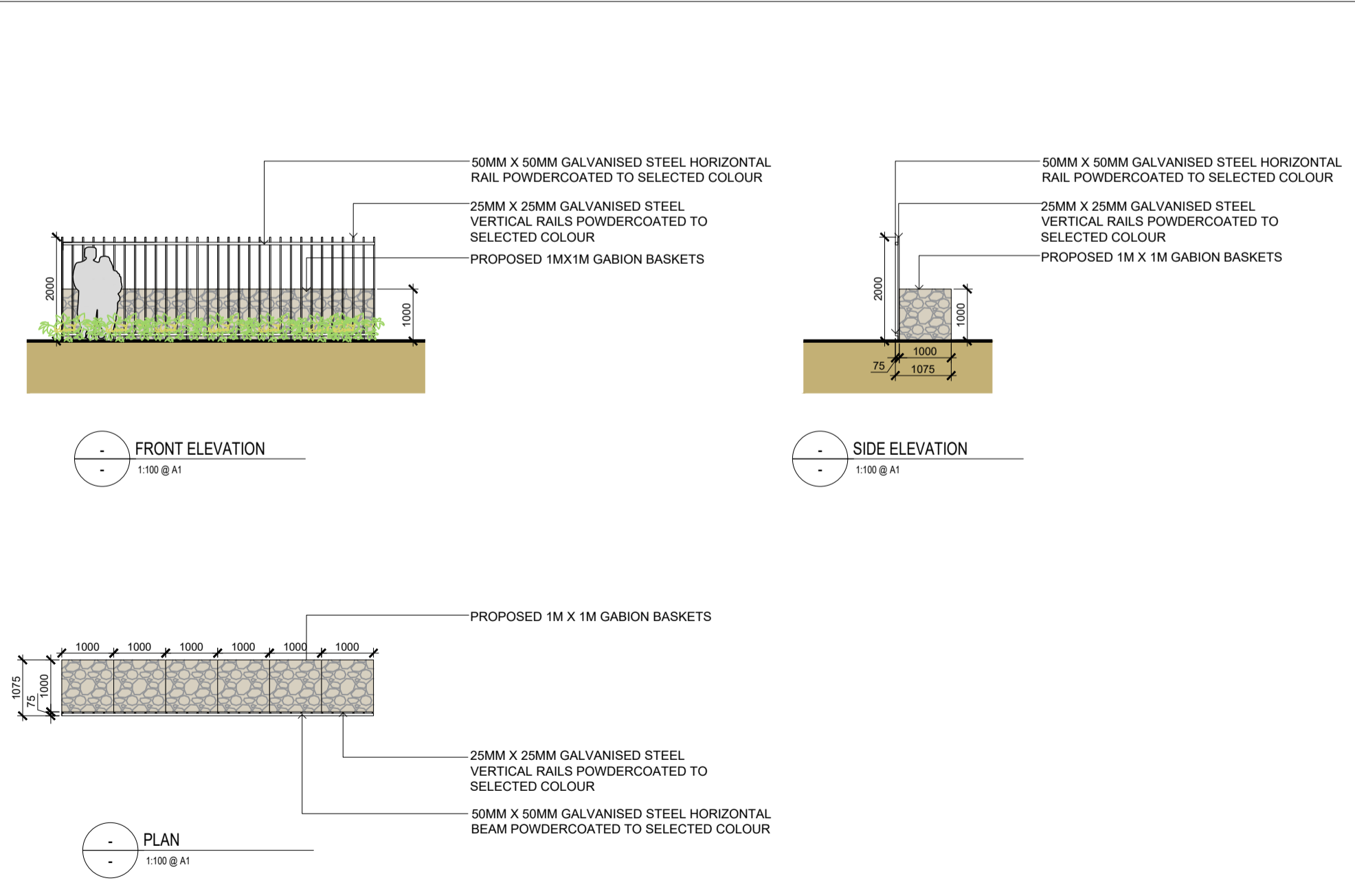
### BOUNDARY TYPE 2



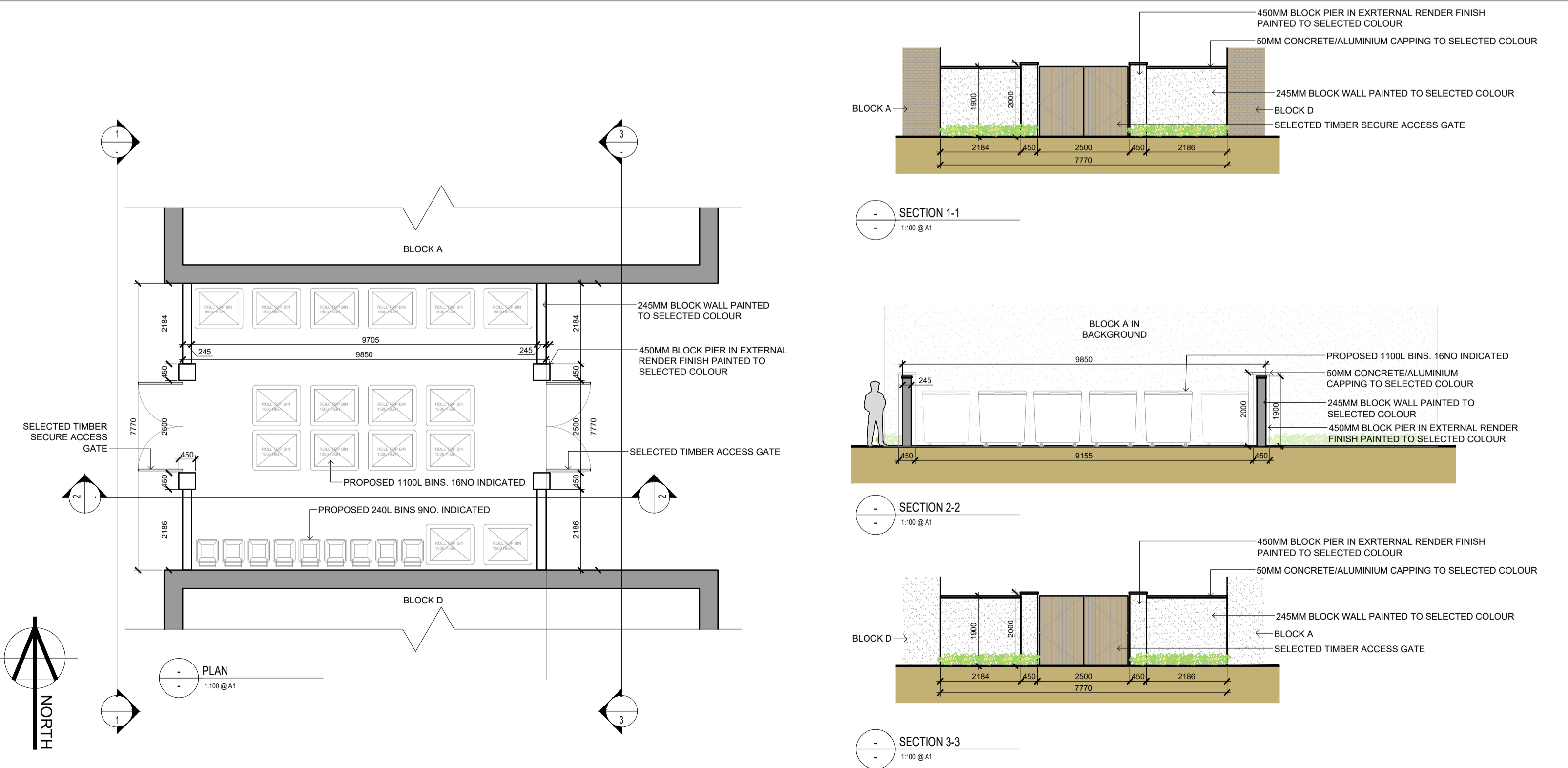
### FIRE TENDER ACCESS GATE



### BOUNDARY TYPE 3



### COMMUNAL OPEN BIN STORE



DATE	REVISIONS TO DRAWING	BY

STAGE LRD PLANNING

**Fewer Harrington & Partners**  
architects, planners - project managers

Studio 14, The Atrium, Maritana Gate, Canada St., Waterford, Ireland  
Tel: +353-51-878991 Fax: +353-51-878678 E-mail: waterford@fhp-architects.com

PROJECT PROPOSED STUDENT ACCOMMODATION AT CORK ROAD, WATERFORD FOR NOEL FRISBY CONSTRUCTION LTD.

DRAWING SITE DETAILS

DRAWN WW	DATE JAN 2024	CAD JOB No. 22032
SCALE @ A1 1:100		DWG No. PP-1.06
SCALE @ A3 1:200		